



KANSAS GEOLOGICAL SOCIETY

BULLETIN

Volume 91 Number 6

November - December 2016

Established 1925

IN THIS ISSUE

Memorial:

Don Shawver - 10

*KGF Cornerstone and
Foundation News - 21*

**Meet The Candidates
Page 12**



**3rd Biennial Field Conference for the
AAPG Mid-Continent Section
Page 18**



THE TOTAL PACKAGE

www.dawson3d.com



MIDLAND 432-684-3000 | HOUSTON 713-917-6772
OKLAHOMA CITY 405-848-7512 | DENVER 303-723-0440
PLANO 972-881-1099 | CALGARY 403-263-7770

Use Your KGS Library For All Your Printing Needs

Old photos?
Old documents?
We can scan them for you!

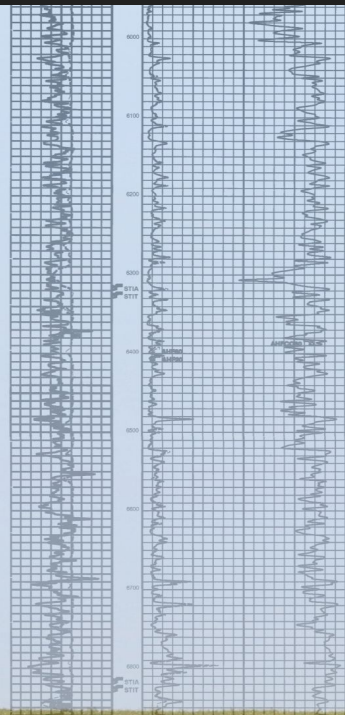


Providing Quality Seismic Since 1993

Visit our website at
www.parangeo.com



3500 N. Rock Rd., Bldg. 800, Wichita, KS 67226 316-636-5552
paragon@parangeo.com



A LEADING SOURCE FOR WELL LOGS

- High Quality Depth Registered Rasters
- On-Line Searchable Catalog
- On-Line Log Header Library
- Two Formats to Choose From
- Discounted Rates Based On Volume
- Best Coverage Available
- No Long Term Contractual Obligation
- Never Have to Delete The Logs You Purchase
- Internet Downloads
- Fast / Economical / Flexible

www.mjlogs.com

1-800-310-6451

Calgary • Denver

Table of Contents

Features

Meet The Candidates.....10
3rd Biennial Field Conference of the AAPG Mid-Continent..18

Departments & Columns:

KGS Tech Talks4
President’s Letter7
Advertiser’s Directory8
Professional Directory15 & 16
Kansas Geological Foundation Cornerstone.....21
Exploration Highlights24 & 25
Kansas Geological Foundation Memorials.....26

ON THE COVER:

*Meet The Candidates on Page 12
3rd Biennial Field Conference AAPG Mid-Continent Section Page 18*

CALL FOR PAPERS

The Kansas Geological Society Bulletin, which is published bimonthly both in hard-copy and electronic format, seeks short papers dealing with any aspect of Kansas geology, including petroleum geology, studies of producing oil or gas fields, and outcrop or conceptual studies. Maximum printed length of papers is 5 pages as they appear in the Bulletin, including text, references, figures and/or tables, and figure/table captions. Inquiries regarding manuscripts should be sent to Rebecca Radford, manager@kgslibrary.com or mailed to 212 N. Market, Ste. 100, Wichita, KS 67202. Specific guidelines for manuscript submission appear in each issue of the Bulletin, which can also be accessed on-line at the Kansas Geological Society web site at <http://www.kgslibrary.com>

SOCIETY Technical Meetings

KGS 2016 Technical Talks

November 1—*"Petroleum Resources of the Great American Carbonate Bank—(Lower Ordovician Upper Cambrian) - Lessons from Heterogeneous Reservoirs, Diverse Traps and Unconformity Thinking"* - A Film Presentation by Charles Sternbach, President of Star Creek Energy

November 15— Film Presentation, TBD

November 29— *"The Marmaton of Eastern Colorado and Western Kansas"* by Jim Milne

December 6— *"Update on Understanding Induced Seismicity Using Seismometer Network and Pressure/Temperature Monitoring in the Arbuckle at Wellington Field and Update on Performance of the Associated CO2-EOR Small-Scale Injection in the Mississippian Reservoir"*, By Lynn Watney

December 20— Film Presentation, TBD

Please remember to check the website for the most up to date information on Technical Talks
<http://www.kgslibrary.com/techtalks.cfm>

*Tech Talks are held at Landmark Square
212 N. Market—4th floor
In the Wisdom Center*



Note: For those geologists who need 30 points to renew their licenses, there will be a sign-in sheet at each presentation and also a certificate of attendance.



BOARD OF DIRECTORS

PRESIDENT

Tim Hellman

PRESIDENT-ELECT

Paul Ramondetta

SECRETARY

Wesley Hansen

TREASURER

Charles Brewer

DIRECTORS

Frank Mize

Paul Gunzelman

Toby Eck

ADVISORS

Jon Callen

Tom Hansen

COMMITTEE CHAIRMEN

Advertising

Kent Scribner

Advisory

Jon Callen

Tom Hansen

Annual Banquet

Bob Bayer

Budget Committee

Chuck Brewer

Bulletin

Rebecca Radford

Continuing Education

Dave Clothier

Distinguished Awards

Frank Mize

Environmental

Kent Matson

Field Trip

Larry Skelton

Fishing Tournament

Randy Teter

Future Plans

Chuck Brewer

Golf

David Barker

Historian

Larry Skelton

Investment

Chuck Brewer

Library

Ted Jochems

Roger Martin

Membership

Larry Friend

Nomenclature

John H. Morrison, III

Picnic

Wes Hansen

Public Relations

Shooting Tournament

Larry Richardson

Technical Program

Dave Clothier

A.A.P.G. DELEGATES

Ernie Morrison
2018

Douglas Davis
2018

BULLETIN STAFF

EDITORS

Ernie Morrison

(316) 264-6366

Wes Hansen

(316) 772-6188

ADVERTISING

Kent Scribner

Stelbar Oil Corp.

(316) 264-8378

PROFILES/MEMORIALS

EXPLORATION HIGHLIGHTS

John H. Morrison, III

Independent O&G

(316) 263-8281

STATE SURVEY

KS Geological Survey

(785) 864-3965

SOCIETY NEWS

KGS Library

(316) 265-8676

EDITOR EMERITUS

Wes Hansen

(316) 772-6188

Larry Richardson

(316) 262-8427

K.G.S. LIBRARY

PHONE 316-265-8676 FAX 316-265-1013

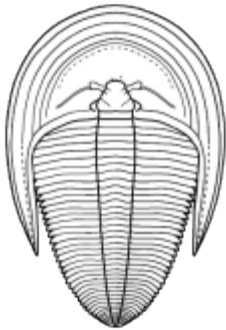
email: frontdesk@kgslibrary.com or

Web: www.kgslibrary.com

The KGS *Bulletin* is published bi-monthly by the Kansas Geological Society, with offices at 212 North Market, Wichita, Kansas 67202 Copyright 2016, The Kansas Geological Society. The purpose of the *Bulletin* is to keep members informed of the activities of the Society and to encourage the exchange and dissemination of technical information related to the Geological profession. Subscription to the *Bulletin* is by membership in the Kansas Geological Society. Limited permission is hereby given by the KGS to photocopy any material appearing in the KGS *BULLETIN* for the non-commercial purpose of scientific or educational advancement. The KGS, a scientific society, neither adopts nor supports positions of advocacy, we provide this and other forums for the presentation of diverse opinions and positions. Opinions presented in these publications do not reflect official positions of the Society.



Twenty-two Trucks Serving
 Kansas—Colorado—Texas—Nebraska—Illinois
 DST's
 Back Pressure testing (G1 & G2)
 Slick line services using the same Weatherford
 Electronic Pressure Gauges used on DST's



1-800-728-5369
 FAX 1-785-625-5620

www.trilobitetesting.com
 trilobite@eaglecom.net

SHOPS LOCATED IN:
 Hays, KS
 Scott City, KS
 Pratt, KS
 Hugoton, KS
 Oberlin, KS
 Clay City, IL

CAN YOU NAME THE CRITTER?

Sponsored by Trilobite Testing, Inc.

Is your paleo up to date?
 If you know the name of the trilobite,
 submit your guess via e-mail to
 manager@kgslibrary.com

Remember that *Trilobite Testing* is
 sponsoring your efforts, so be sure to thank
 Paul Simpson the next time you see him.

CONGRATULATIONS!!
Tom Dudgeon correctly identified
The last one as: Lermontovia

Bulletin committee members and PhD's in
 Paleontology are prohibited from entering.



| | | |
|---|--|---|
| UNIVERSITY OF KANSAS Franklin D. Murphy, M.D., Chancellor STATE OF KANSAS George Docking, Governor MINERAL INDUSTRIES COUNCIL B. O. Weaver ('77), Chairman R. A. Spomer ('77) W. L. Stryker ('77) Howard Carey ('78) Simon S. Clark ('81) Lee H. Cornell ('81) Brian O'Brien ('79), Vice Chairman E. J. Jungmann ('81) George K. Mackie, Jr. ('59) Charles Cook ('60) Dana Hansen ('60) Joe E. Donham ('60) | <h2 style="margin: 0;">THE SURFACE FEATURES OF KANSAS</h2> <p style="margin: 0; font-size: x-small;">By RAYMOND C. MOORE</p> | STATE GEOLOGICAL SURVEY Frank C. Foley, Ph.D., State Geologist and Director William W. Hambleton, Ph.D., Assistant State Geologist and Assistant Director Raymond C. Moore, Ph.D., Sc.D., Principal Geologist STATE BOARD OF REGENTS A. W. Hershberger, Chairman McDill Bond Claude C. Brasley Ray Evans Clement H. Hill Mrs. Leo Harghey Lawrence Margus Oscar Stadler Harry Valentine |
|---|--|---|

Get Your Maps copied at the KGS library

We can scan, copy, and print up to 44" wide

Color or Black & White

Solid Color @ \$4.00/sq. ft.

Line maps with color @ \$3.00/sq. ft.

President's Letter

KGS Members,

We have a 92 year old Library and Society that has endured many economic swings in its history and over the years has turned into a well-respected and coveted library. But in difficult economic times, those in charge have a fiduciary duty to make hard decisions that are uncomfortable to some.

Below is what faced the Board for 2016.

In January the new Board received the report from the Manager showing an (-\$110,471) loss for 2015 to the KGS. \$159,129 of expenses was cut during 2015, but we also saw a reduction in sales of \$144,061. Even with that, KGS still lost (-\$110,471). All cuts enacted by the 2015 KGS Board and Manager had been made by October 2015. Most KGS Library membership renewals come in during January and February so the Board hoped that we won't see a continual reduction of memberships in the KGS and WDL as we did in 2015.

In March, the board reviewed several options requested by the Manager and determined that any reasonable increase in fees or membership dues would have a minimal impact on the finances. But the idea of raising prices was tabled and committee of the President and Treasurer were tasked to work with the Manager to find alternative measures to cut costs.

Paper library sales are averaging \$5,672 per month, down from the \$11,460 in 2015 and the \$22,245 average per month in 2014. The WDL download sales stand at \$2,465 per month, down from an average of \$6,200 per month in 2015. By April the Library Committee was instructed to come up with at least four proposals to help the library trim expenses.

By August, the Board acted on one of the options by the Library Committee, which was the elimination of the Managers position by December 31st. The KGS had a cash loss for the month for August at (-\$2,009) bringing the cash loss for the year at (-\$15,569). The KGS has lost money for the last 5 months in a row with an average monthly loss at (-\$15,401).

At the September Board Meeting, September's cash loss was (-\$13,803), bringing the yearly cash loss to (-\$29,372). Mr. Joe Walsh, accountant from Nord & Walsh, P.A., presented a review of the 2015 Financial Statement. After yearend adjustments for various items, the audit reported that the KGS has a net loss of (-\$68,896). The large difference from the 2015 Managers Report was the result of how the payments made to the KGS Survey for our WDL software and upkeep were classified. We paid the Survey \$70,440 in 2015. Only 1/6 of that total payment, equaling \$11,741 was booked as an expense. The remaining \$58,699 will be amortized over the next 3 years. If the remaining \$58,699 would have been fully written off for 2015 and not amortized, it would have resulted in the KGS taking a cash loss of (-\$127,285), which more closely matches the 2015 yearend report presented to the Board in January. The KGS will now book, 1/3 of that of that 2015 payment to our 2016 KGS financials adding an additional loss of (-\$23,245) for this year. Our cash investments as of April of 2015 were \$1,127,571. As of October 2016 we have \$1,075,858 resulting in a reduction in of (-\$51,713). Our investments, so far, have help in taking bigger losses, but there is no guarantee that they will keep up with our current financial situation. By early October, the Library Committee and the Board had voted to eliminate the Managers position without delay.

In conclusion, these actions will be enacted to keep the Members abreast of the monthly activities of the KGS, future Board and Committee decisions and includes our current status of the operation of our library:

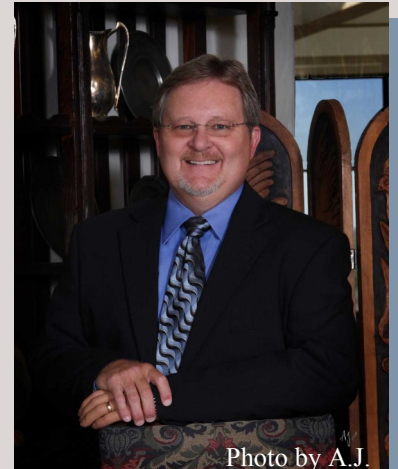


Photo by A.J.

Kansas State University
DEPARTMENT OF GEOLOGY

Graduate education for active professionals in this innovative program, workshops, site visits and distance courses help professionals advance in their careers. Whether your goal is to receive academic credit, certifications or a master's degree in geology, you'll find a path that leads to your career goals.

CHOOSE FROM SPECIALIZATIONS IN:

- ▶ Petroleum geology
- ▶ Environmental geochemistry
- ▶ Structural Geology
- ▶ Groundwater
- ▶ Exploration geophysics
- ▶ Geomicrobiology

LEARN MORE

Contact Pamela Kempton, department head, for more information at pkempton@k-state.edu. Or contact any of our program partners to learn more.

*K-State Global Campus: dce.k-state.edu
 Geology department: k-state.edu/geology
 Graduate School: k-state.edu/grad*



ADVERTISER'S DIRECTORY

| | <i>page</i> |
|-----------------------------------|-------------|
| Allied Cementing Company, Inc | 23 |
| Dawson Geophysical Company | 2 |
| Duke Drilling | 23 |
| GeoSteering | 11 |
| Kansas Geological Foundation | 18 |
| Kansas State University | 8 |
| Lockhart Geophysical | 23 |
| MJ Systems | 2 |
| Murfin Drilling Company, Inc | 23 |
| PARAGON Geophysical Services, Inc | 2 |
| Professional Directory | 15-16 |
| Trilobite Testing | 6 |
| Walters Digital Library | 9 |
| Well Enhancement Services, LLC | 11 |

ADVERTISER'S RATES: 2016

| Full Page | B&W | Color |
|--|---------|---------|
| 6 issues | \$2,000 | \$2,500 |
| 3 issues | \$1,080 | \$1,325 |
| 1 issue | \$480 | \$525 |
| 1/2 Page | | |
| 6 issues | \$1,000 | \$1,500 |
| 3 issues | \$540 | \$825 |
| 1 issue | \$225 | \$350 |
| 1/4 Page | | |
| 6 issues | \$600 | \$900 |
| 3 issues | \$325 | \$525 |
| 1 issue | \$150 | \$250 |
| 1/8 Page | | |
| 6 issues | \$300 | \$500 |
| 3 issues | \$175 | \$325 |
| 1 issue | \$75 | \$185 |
| Professional Ad (Business Card) | | |
| 6 issues | \$90 | \$180 |

For one-time ads, call Rebecca at 316-265-8676

Log in to
 Walters Digital Library
 At
www.kgslibrary.com

Log in as our guest
 and see the Society's Database
 A convenient way to see what
 you might want to order!
 Call or email your order to:
 316-265-8676
frontdesk@kgslibrary.com

- Copies of all KGS minutes, which include financials, will be available at the front desk of the library the following month and will again be published in the KGS Bulletin (The latter was discontinued near the end of 2014).
- For 2017, the remaining Board Members and Library Committee Members (which includes 4 Past KGS Presidents) will continue to assist the new Board on the running of the KGS Library and WDL for the time being, without a Manager.
- The Library Committee will assist any future Board on the hiring of a Manager, if the need arises.

One thing that will affect every Board from now on is our changing demographics. As of a December 2014 count, 632 KGS members, which is a staggering 85%, are 50 years old or older. Only 15% or 112 members are 49 years old or younger. In the ten years or more that we experienced high oil prices; we did not see a surge of young geologists entering the field to offset the aging of our membership. Kansas activity will remain low until the oil price recovers. That diminished activity will further discourage younger people from entering geology. The low price environment will cause a continued depletion of our cash. The costs to run and maintain the library will continue to fall on fewer members over time, greatly increasing the burden per member.

It was a difficult time being on the Board last year as President Elect and as President this year watching continued job losses, reduction of rig counts and declining revenues at the KGS Library. I take responsibility that nothing has been published in the KGS Bulletin this year concerning our losses. But decisions regarding about making changes continued to get postponed. We were hoping for some good news in reducing our expenses, working with our employees to accomplish those goals of a balanced budget and hopefully see some increases in revenue.

We as an organization had become a little complacent during our prosperous years, as most all of us were enjoying the fruits of our labors. But those times have changed. We as a Board and our employees are very dedicated to the long term financial health of the KGS and will continue to assist all of our members and to insure that the KGS Library and the WDL are always at the forefront of our industry.

Tim Hellman
President-KGS

Memorial—*Don Shawver*



Donald Dean Shawver 83, of Wichita, KS, passed away on Thursday, September 15, 2016, at his home surrounded by family. Don was born July 26, 1933, to Dwight Moody and Laura Jane (Mogg) Shawver of Augusta, KS. When he was 3 years old, the family moved to Wichita. He graduated from Wichita East High School and was a member of the Phi Gamma Delta fraternity at the University of Kansas. He graduated in 1954 with a Bachelor's of Science degree in Geology at Wichita State University.

Don's lifelong career was in the oil and gas industry. He was active in the Kansas Independent Oil and Gas Association, and served as past president of the Petroleum Club of Wichita. Don was a 50+ year member of the Kansas Geological Society and supporter of the Kansas Geological Foundation.

Don was married to Helen Joan Davis of Wichita on June 5, 1954. They celebrated 62 years of marriage this year. Don was preceded in death by his father and mother; brothers, Norman and Herschel Shawver; and sisters, Elda Shawver, and Dorothy Poe. He is survived by his wife, Helen; children, Matthew Shawver (Stacia Razook) of Wichita, Susan Shawver (Dale Wells) of Leon, KS, and Christopher Shawver (Connie) of Wichita; sister, Mildred Seely of Poulsbo, WA; brother-in-law, Bill Davis of San Diego, CA; grandchildren; Emily Ingram (John), Joanna Eicher (Travis), Katherine Orr (Terry), and Jonathan Shawver; and several nieces and nephews. He was an avid golfer and outdoorsman with a big heart and wry sense of humor. Many thanks to his friends for their prayers and support though his illness, and to the staff members of Home Instead Assisted Living, Larksfield Place Rehabilitation and Harry Hynes Memorial Hospice. Special thanks to caregiver Jean Welle. Funeral Services were held Tuesday, September 20, at Downing & Lahey Mortuary East Chapel. Memorial donations may be made to [American Cancer Society](#), P.O. Box 22718, Oklahoma City, OK, 73123-1718 and Harry Hynes Memorial Hospice, 313 S. Market, Wichita, KS, 67202.

Robert F. Walters Digital Library

Log in as our Guest

username: guest

password: guest

316-265-8676



**Let Us Print Your Geo Reports
And Save Your Time For Finding More Oil & Gas
Top Quality Color Printing For Our Membership**

Email your files to: kgsorders@gmail.com

WOULD YOU LIKE TO INCREASE YOUR PRODUCTION AT A FRACTION OF THE COST OF HORIZONTAL DRILLING?



Well Enhancement Services, LLC is jetting laterals utilizing new technology and coiled tubing. We now have the ability to place hundreds of gallons of acid hundreds of feet away from the well bore. This allows us to not only enhance existing production but to produce reserves previously unreachable. It has established itself by repeatedly increasing production in both new and existing wells. Contact us for more information, questions or to schedule your next well with **WES**.



Please Contact Us:

Phone: (785) 625-5155

Fax: (785) 625-4151

Field: (785) 259-4638

wesofhays@hotmail.com
Box 87, Schoenchen, KS 67667

“Tap into success....with WES”

www.**GeoSteering**.com

281-573-0500

info@geosteering.com

Free introductory consultation with modeling: let us demonstrate whether images or propagation resistivity could add value to your well.

Personnel with degrees & 20+ years of oilfield experience

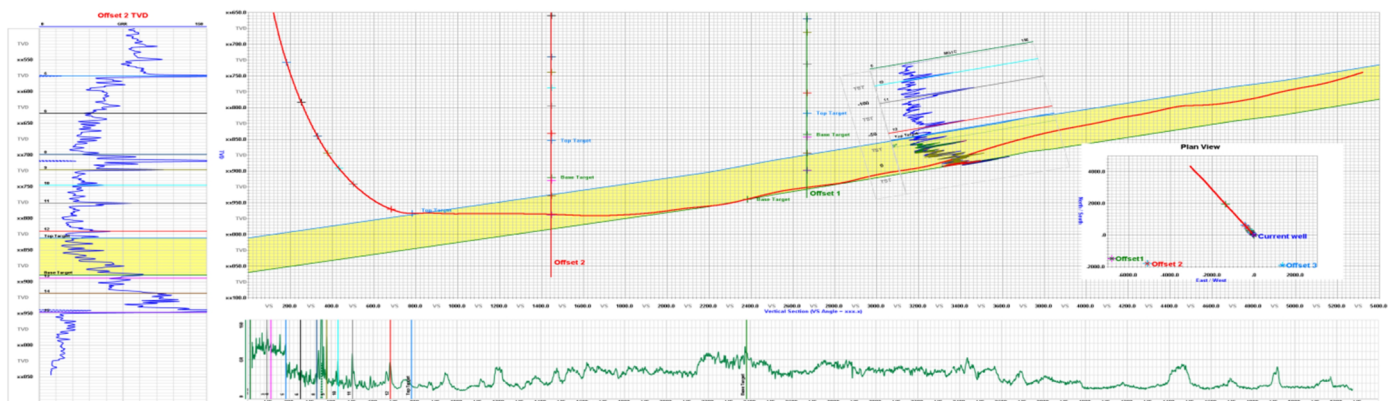
Proprietary software

TST interpretation for GR only jobs

Image displays / interpretation for jobs with azimuthal GR, resistivity or density

Resistivity modelling / interpretation for jobs with LWD propagation resistivity

Real-time (always)



Meet The Candidates

Vice President 2017 - President 2018

Beth Isern



Education:

M.S. Geology, Wichita State University, 1991
B.S. Geology, Wichita State University, 1983

Professional Experience:

Trans Pacific Oil Corp. Geological Manager 2011 – Present
Trans Pacific Oil Corporation, Staff Geologist 2009 – 2011
Consulting Geologist 2005 – 2009
Pintail Petroleum, Ltd., Geologist 1981 – 2009

Professional Affiliations:

KGS, KGF
American Association of Petroleum Geologists
Association For Women Geoscientists
Oklahoma Geological Society
Wichita State University – Fairmount College Advisory Council

KGS Board and Committees:

KGS: Board of Directors 2007
KGS Board Secretary-Treasurer 2008-2009;
KGF: President 2011; Vice President 2012

Mike Kidwell



Education:

BA Geology Wichita State University 1979

Professional Experience:

Geologist Mull Drilling Company 1979-1982
President Mull Drilling 1982-1991
Consultant 1991-present

Professional Affiliations:

KGS, KGF

KGS Board and Committees:

Past KGF Board member

Secretary 2017—Treasurer 2018

Ken Dean



Education:

B.S. Geology, Wichita State University, 1980.

Professional Experience:

Murfin Drilling Company, Inc., 2003-present; Kansas Geological Survey 2000-2003; McCoy Petroleum 1993-1998; Independent Geologist 1991-1993; Petroleum Inc., 1981-1990; Aladdin Petroleum, 1980-1981; D.R. Lauck Petroleum, 1979-1980.

Professional Affiliations:

Kansas Geological Society; Kansas Geological Foundation; AAPG.
Kansas Geological Foundation: Board 2005-2007, President 2007.

KGS Board and Committees:

KGS Director at Large 2010-2011

Ryan Dixon



Education:

B.S. Geology, Wichita State University, 2007

Professional Experience:

Geologist, Dixon Energy Inc., 2007-Present
Geotechnician, 2004-2007

Professional Affiliations:

Kansas Geological Society

KGS Board and Committees:

KGS Board—Director 2011-2012

Director 2017-2018

Tom Dudgeon



Robert Milford



Education:

B.S. Geology Wichita State University 2011

Professional Experience:

Exploration and Well Site Geologist
Vincent Oil Corporation 2011-present

Professional Affiliations:

AAPG, KGS

Education:

B.S. Geology Wichita State University 1982

Professional Experience:

Geologist Ritchie Exploration, Inc. 1980-2004
Independent Geologist 2004-present

Professional Affiliations:

KGS, KGF, Kansas License #111

KGS Board and Committees:

KGS Board Secretary 2011
KGS Board Treasurer 2012
Walters Digital Library Committee
Bob Slamal Memorial Type Log Committee

PROFESSIONAL DIRECTORY

Kirk Rundle
Consulting Geophysicist
*3D Seismic Design, Acquisition to Processing QC.,
 Interpretation and Analysis, Subsurface Integration*
 7340 W. 21st. N., Ste. 100
 Wichita, Kansas 67205

Office: 316-721-1421 Fax: 316-721-1843
 Email: kirk@rundlegeo.com

ROGER L. MARTIN
Independent Petroleum Geologist
 200 E 1st St, Ste 405, Wichita, KS 67202

Cell: 316-833-2722 Office: 316-250-6970
 KS Field Cell: 316-655-1227
 Fax: 316-425-3829
 Email: rogermartingeo@yahoo.com


Blue Ribbon Drilling, LLC
 PO Box 279, Dewey, OK 74029

Phone and Fax: 918-534-2322
 John's Cell Phone: 918-440-9639
 Larry's Cell Phone: 918-440-9638
 Jeff's Cell Phone: 918-440-9647
 Email: johnroutree@bratco-operating.com

ALFRED JAMES III
Petroleum Geologist
 Kansas - Colorado - Utah

4912 E. 29th St. N., Ste. 3, Wichita, Kansas 67220

SIPES # 1111
 Office (316) 267-7592
james.alfred21@yahoo.com



Banks Resources

Scott Banks
Petroleum Geologist
banksb@aol.com
 Cell: 316.253.8550

1700 N. Waterfront Pkwy.
 Bldg. 300 • Suite C
 Wichita, KS 67206

Phone: 316.558.5262
 Fax: 316.558.5263

M. Bradford Rine
Honorary Life Member—Kansas Geological Society

*Licensed Geologist—KS, #204
 Registered Professional Geologist—Wyo. # 189
 Certified Geologist—A.A.P.G. # 2647
 S.I.P.E.S. # 1584 S.P.E. #109833-4*


PROSPECT EVALUATION • PROSPECT GENERATION
 WELLSITE SUPERVISION • EXPERT TESTIMONY • OPERATIONS
 PROPERTY EVALUATION • RESERVOIR STUDIES
 DRLG./COMP. CONSULTATION

Suite 415
 100 S. Main
 Wichita, KS 67202

Office: (316) 262-5418
 Fax: (316) 264-1328
 Cell: (316) 250-5941

WESLEY D. HANSEN
Consulting Geologist
 Well site Supervision • Geologic Studies
 212 N. Market, Ste 257
 Wichita, Kansas 67202
 Mobile: (316) 772-6188
whansen4651@sbcglobal.net

**Your business card ad
 Could be right here
 For only \$90/year**



KEVIN L. KESSLER
 INDEPENDENT/CONSULTING PETROLEUM GEOLOGIST

WELLSITE SUPERVISION • GEOLOGIC RESEARCH
 OIL & GAS PROSPECTS
 KANSAS & EASTERN COLORADO

MAILING ADDRESS PHONE
 1199 N. PONDEROSA RD. RES.: (316) 522-7338
 BELLE PLAINE, KS 67013 MOBILE: (316) 706-6636
 EMAIL: KKESSLER1199@AOL.COM

MELLAND ENGINEERING, INC.
Petroleum Engineering & Geological Consulting

James E. Melland, P.E., P.G.
 President

Office: (620) 241-4621 Fax: (620) 241-2621

jamesm@mellandengineering.com
www.mellandengineering.com

P.O. Box 841, McPherson, KS 67460

KGJ ENTERPRISES

Contract Oil & Gas Accounting &
 Office Management

Kathryn G. James, MBA (316) 775-0954
 4278 SW 100th ST. (316) 250-5989
 Augusta, KS 67010 kgjames@onemain.com

WOW
CHEESESTEAKS
 AND HOAGIES

803 NORTH WEST STREET
 WICHITA, KANSAS - 67203
 (316) 491-1239
 CALL OR COME IN - SEATING INSIDE
www.wowcheesesteaks.com

Covey—*The Well Watchers*

"One Thousand Wells and Counting"

Curtis E. Covey **Wellsite Petroleum Geologist**

Gas Trailer Cell: 316-217-4679
Email: wellsitegeol@gmail.com

Office: 316-776-0367
6548 Bedford Circle
Derby, Kansas 67037

Gas Detection Trailer & Internet/Phone Communications



NOTICE!!!!

WSU GEOLOGY CLUB & Papa John's Pizza

Papa John's offered WSU student organizations an opportunity to raise monies for their organizations.

The **WSU Geology Club** is participating
And **YOU** can help them!

When ordering pizza from Papa John's,
Use this code: **WSU004**
(those are zero's, not letter O)

With this code, the customer will receive 40% off their entire online order and WSU's AAPG Student Chapter will receive 10% of the money spent on the order.

Eating pizza tonight?
Let's help WSU Geology Club!

Monies raised will be used towards gas money to travel to local schools when they promote the geosciences to grade schools, registration costs for workshops, seminars and AAPG Student Expos, and social and academic events like an upcoming "Lunch and Learn" series next fall.

We Invite You To join

Kansas Geological Foundation

***\$50.00 membership is
tax deductible***

Call 316-265-8676

***Or send checks to:
Kansas Geological Foundation
212 N. Market, Ste. 100
Wichita, KS 67202***

The Following Are For Sale

Kansas Completion Cards:
Several sets (call for more information)

Oklahoma Completion Cards

New Mexico Completion Cards

North Dakota Completion Cards

Utah Completion Cards

Microfiche Electric Logs

***Kansas
Oklahoma
Texas***

Geological Office Furniture:

- 8-drawer completion card cabinets
- 7-drawer cabinets
- Map cabinets—metal—2 available
- Map racks—different sizes

Call: 316-265-8676
Ask for Ted

2016 KGS Sporting Clays Tournament October 14, 2016 2016 SPONSORS

Andy's Mud & Chemical
Basic Energy
Beredco Drilling
Brian Fisher
Buckeye Supply
Central Kansas Surveying
Coffeyville Resources
Covey-The Well Watchers
Diamond Testers
Eagle Creek Corp.
Edwards Consulting
Empire Energy
Ernie & Pat Morrison
Grand Mesa
Gressel Oil Field
Rick Saenger
Larry Richardson
Lockhart Geophysical
Lotus Operating
Mud-Co
Mull Drilling
Murfin Drilling
NALCO Chemical
CHS McPherson Refining, Inc.
Paragon LLC
Raymond Oil Co.
Sunrise Oilfield Supply
Cased Hole Solutions
Sweetman Investments, LLC
Theis Dozer Service
Thoroughbred Associates
Trilobite Testing
WW Drilling

*The KGS Library is pleased to
announce a new service*



Creating
LAS files
from our logs
or yours

**\$20.00 per
curve!!**

Quick
turn-around

Send us your log file
or tell us which of
ours you would like
converted.

316-265-8676

The Kansas Geological Society maintains its ownership
and copyright when converting library log files to LAS

The Carboniferous of Southwest Missouri and Northwest Arkansas

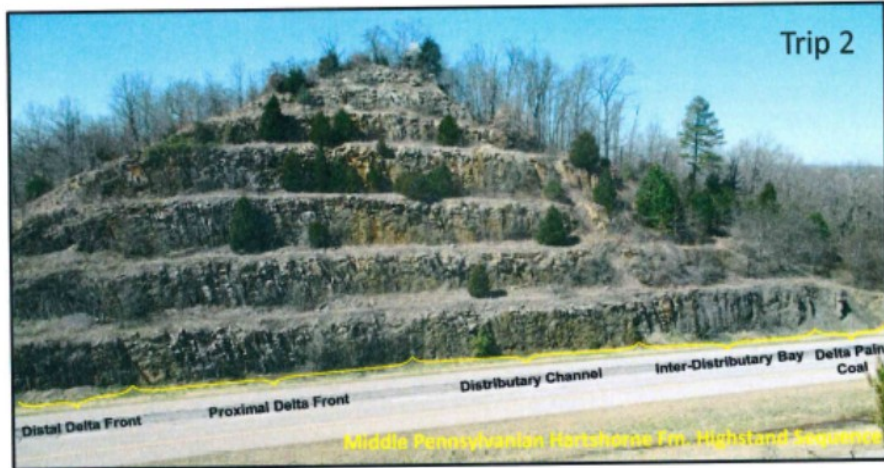
(Submitted by Ernie Morrison)

The Third Biennial Field Conference for the AAPG Mid-Continent Section was held in Arkansas September 30th through October 2, 2016. Wichita was well represented and had in attendance Meghan Curtis, Dan Fredlund, Kerry Parham, Jerry Honas, Beth Isern and Ernie Morrison. In addition to these industry people Doug Davis brought 10 students from Wichita State University. The conference was a sell out and had maximum attendance.

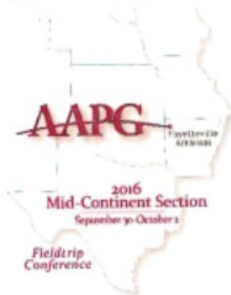
Jamie Woolsey was the General Chair and worked in conjunction with the University of Arkansas to put a twofold field trip: one was a Pennsylvanian trip and the other was a Mississippian trip. This allowed for smaller groups to see more outcrops. The field trips went all day on Saturday and one half day on Sunday. To show those persons that went on one trip or the other the field book manual consists of all field trip stops. To prepare for the field trips there was an overview of both trips by field trip leaders.

On Saturday night after the first day of the field trip there was a dinner and a presentation by Dr. Tom Paradise, a faculty member at the University of Arkansas. Dr. Paradise has worked on Petra for 25 years and in conjunction with PBS has a special: Petra: Lost City of Stone.





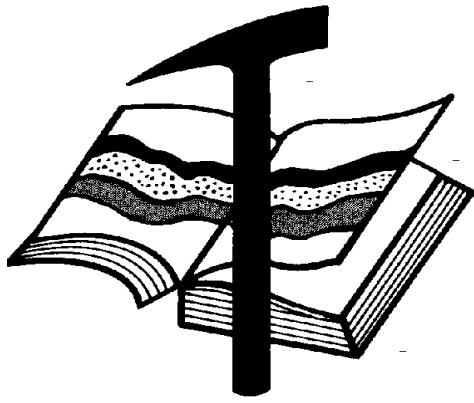
The Carboniferous of Southwest Missouri and Northwest Arkansas
 Third Biennial Field Conference, AAPG Mid-Continent Section



Hosted by
 The Fort Smith Geological Society
 and
 The University of Arkansas Geosciences Department

September 30-October 2, 2016
 Fayetteville, Arkansas





Kansas Geological Foundation

Web Site: www.kgfoundation.org

**212 North Market
Wichita, Kansas 67202**

A not-for-profit educational and scientific corporation

GOALS:

- promote geology and earth science
- preserve geological records
- establish memorials and endowments
- support field trips and seminars
- financial aid and grants to students

PLEASE HELP SUPPORT THE FOUNDATION

Kansas Geological Foundation Services

The Kansas Geological Foundation provides the following services as a part of the organization's commitment to educate the public regarding earth science.

Speaker's Bureau

A list of speakers available to talk about various aspects of geology may be obtained by contacting Janice Bright at the KGS Library, 265-8676. This service is free to the public.

DVD/Videotape Library

The KGF maintains a DVD & videotape library focused primarily on the various fields of earth science. These tapes may be checked out without charge by the public. To obtain a list of tapes, please contact the KGS Library, 212 N. Market, Ste. 100, Wichita, KS 67202, or call Janice Bright at 265-8676.

The Kansas Geological Foundation was founded in March, 1989 as a not-for-profit corporation under the guidelines of section 501(c)(3) of the tax code to provide individuals and corporations the opportunity to further the science of geology. It is dedicated to providing charitable, scientific, literary and educational opportunities in the field of geology for the professional geologist as well as the general public.

KGF can receive in-kind donations through which the donor may receive a tax deduction. Of equal importance, the KGF provides the financial resources to sort, process and file this data at the KGS library. If you have a donation to make, please contact the KGF at 265-8676.

Your tax-deductible membership donation helps to defray the cost of processing donations and to support public education programs about the science of geology. Annual membership begins at \$50.00 per year. Donations of \$100.00 or more are encouraged through the following clubs:

| | |
|-------------------------|------------------|
| Century Club | \$ 100 to \$ 499 |
| \$500 Club | \$ 500 to \$ 999 |
| Millennium Club | \$1000 to \$5000 |
| President's Club | \$5000 and over |

Kansas Geological Foundation

Cornerstone

KGF PRESIDENT'S REMARKS

Dear KGF Member,

The encouraging trend in posted oil prices, along with NYMEX trading figures, indicate a modest recovery of the low oil prices we have received during the last two years. This is certainly helpful for everyone that is trying to maintain their oil exploration and operations during this period. I want to thank everyone for their continued financial support of the Kansas Geological Foundation during this difficult period. I also want to express my appreciation to the board members who have agreed to volunteer their time and talent to the foundation.

The Kansas Geological Foundation has awarded \$11,500.00 in scholarships to geology students enrolled at the Kansas universities that offer geologic instruction. A portion of these scholarships were underwritten with a \$4,500.00 donation that Ernie Morrison was able to obtain from the A.A.P.G. scholarship fund. There has been an additional \$1,406.80 awarded so far this year for geological educational grants.

Due to budget restrictions this year for the Kansas Geological Society, the foundation has resumed funding nearly all of the data integration into the Walters Digital Library. Progress is being made but there are tens of thousands of electric logs, and other material, that still need to be integrated into the digital library. David Doyel has raised \$25,000.00 this year to fund this project. These five individuals or companies have each graciously donated \$5,000.00; David Doyel, Scott Robinson, Murfin Drilling Company, Inc., J. Fred Hambright, and Paragon Geophysical Services, Inc. Please thank each of these individuals for their generous support.

The KGF educational programs, scholarships to Kansas geology students, and the preservation of geologic data require a significant amount of financial resources each year. Therefore, in spite of the difficult period we have experienced recently, I ask for your continued support of the Kansas Geological Foundation. If a friend or colleague is not a member of the KGF, please ask them to join.

John Washburn

Kansas Geological Foundation News

KGF Fall 2016 Scholarship Recipients

| | | |
|-----------------|------------------------|-----------|
| Elijah Turner | University of Kansas | \$1000.00 |
| Jacob Clayton | Kansas State Univ. | \$1000.00 |
| Nicholas Hixon | Fort Hays State Univ. | \$1000.00 |
| Bridget Pettit | University of Kansas | \$500.00 |
| Randal Wehrbein | Emporia State Univ. \$ | 500.00 |
| Maggie Graham | University of Kansas | \$500.00 |
| Adam Yoerg | University of Kansas | \$500.00 |

Students: The KGF awards scholarships each December and May. Check with your department chairs for applications. You must submit complete applications by the deadline.

Grants to help with research on Kansas related geology are also considered for aid.

2016 KGF Grants

| | |
|---------------|----------|
| Tyler Selves | \$400.00 |
| Elson Core | \$400.00 |
| Kyle Marquart | \$400.00 |

Kansas Geological Foundation Video / DVD Collection

The KGF has an extensive collection of videos available for check-out at no charge.

Only pay for shipping back.

These are ideal for classroom or general public viewing.

See the web for titles & descriptions
www.kgfoundation.org

Call 316-265-8676

Ask for Janice to check out videos

Robert F. Walters Digital Library
 The most complete source for Kansas data
Database updated nightly
Day or Night
You can get to the data as you need it
www.kgslibrary.com
To Join: call 316-265-8676

12 Drilling Rigs
To depth of 8,500 ft.



WESTERN KANSAS
SOUTHERN NEBRASKA
EASTERN COLORADO

For contract information contact:
Blaine Miller
Drilling Manager

316-858-8607 (Direct)
316-267-3241 (Main)

250 N. Water, Ste. 300
Wichita, KS 67202

DUKE
DRILLING COMPANY

ROTARY DRILLING CONTRACTOR

620 Hubbard PO Box 823
Great Bend, KS 67530
Phone 620-793-8366

100 S. Main, Ste. 410,
Wichita, KS 67202
Phone 316-267-1331
Fax 316-267-5180



2D & 3D Vibroseis Acquisition
ARAM*AIRES Seismic Recording System

1600 Broadway, Suite 1660 • Denver, CO 80202-4915
(303) 592-5220 • info@lockhartgeo.com
for complete information go to: www.lockhartgeo.com

Great Bend Ness City Medicine Lodge
(620) 793-5861(785) 798-3843 (620) 886-5926



GREAT BEND 793-5861 NESS CITY 798-3843
MEDICINE LODGE 886-5926
Russell Oakley
(785) 483-2627 (785) 672-3452

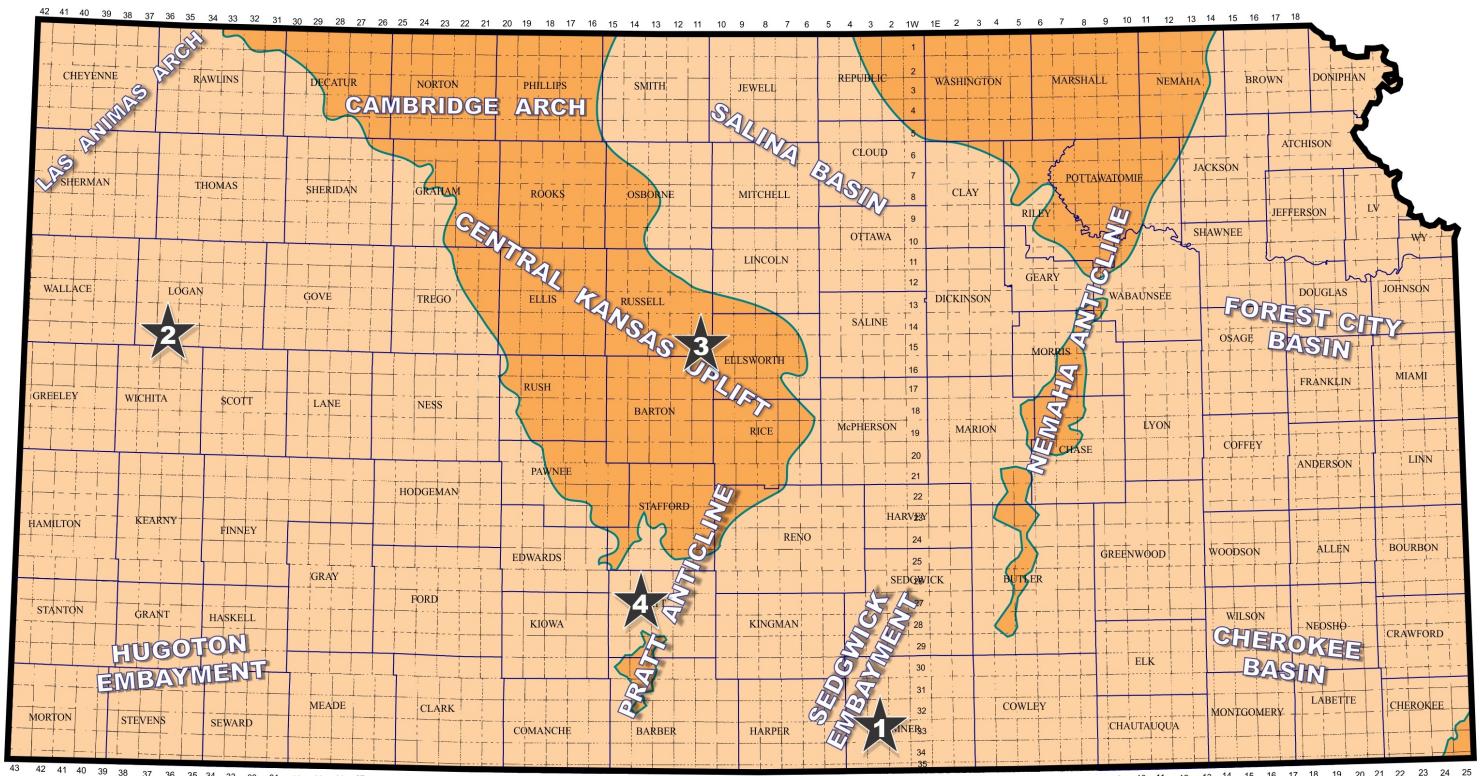
AAPG Needs You!
Professional geoscientists, share your world!

The Mid Continent Section has **17 AAPG Student Chapters**, but only **3 Visiting Geoscientists**...which makes it almost impossible to have a professional geoscientist visit to each school at least once a year or even once every two years. The aim of AAPG's program is to give students a flavor of a professional life in energy resources. It also hopes to encourage dialog between industry and academia.

To be a Visiting Geoscientist bearing the AAPG flag, you are asked to have at least 5 years of experience and make at least one visit per year to a university. It can be a school with an AAPG Student Chapter, or a college/university without one. Your choice.

The Mid Continent schools with Student Chapters are: Missouri University, Fort Hays State University, Iowa State University, Kansas State University, Missouri State University, University of Nebraska, Northwest Missouri State University, Oklahoma State University, University of Oklahoma, University of Arkansas, University of Iowa, University of Kansas, University of Missouri, Columbia University of Tulsa and Wichita State University.

Contact Robbie Gries, co-Chair VGP committee, Denver, if you are interested in learning more. rreries@aol.com



Ritchie Exploration, Inc., Wichita (KS), has successfully completed two new wildcat discoveries in the State. The two wells were recently put on pump at undisclosed rates. First in Scott County, the #1 York 34-D was drilled to a total depth of 4,710 ft in the SE/4 of section 34- T17s- R32W, about two miles north and three miles east of Scott City. The well discovered new Marmaton oil reserves in the SE/4 of section 34-T17s-R32W. The new field is named Twin P.

In Lane County, Ritchie's #1 Anderson 32-B is producing crude oil from an undisclosed zone in the NW/4 of section 32- T19s- R30W. The remote wildcat well found new reserves over two miles from the Neufeld Field (1997) where the Marmaton formation is productive. The #1 Anderson 32-B was drilled to a total depth of 4,730 ft. The new Sutton Township Field is located about eight miles south and three miles west of the town of Amy.

L. D. Drilling, Inc., Great Bend (KS), is producing oil from the Lansing-Kansas City formation at their #1-27 Mauler Trust in the SW/4 of section 27- T18s- R14W, in Barton County. The new Mauler pool opener found new reserves nearly one mile from the Laud Southwest Field (2013), where Arbuckle oil is currently being produced. Total depth was reached at 3,620 ft. The new field lies approximately five miles southwest of the town of Hoisington.

H & D Exploration LLC, Hoisington (KS), has discovered new Mississippian oil reserves in Stafford County at their #1 Dozier in the NW/4 of section 21- T25s- R11W. The wildcat well found oil deposits over one mile east of known Arbuckle oil production in the Zink Field (2009). Operator drilled the well to a total depth of 4,200 ft. The new field Zink East Field is located nearly seven miles southeast of Stafford, Kansas.

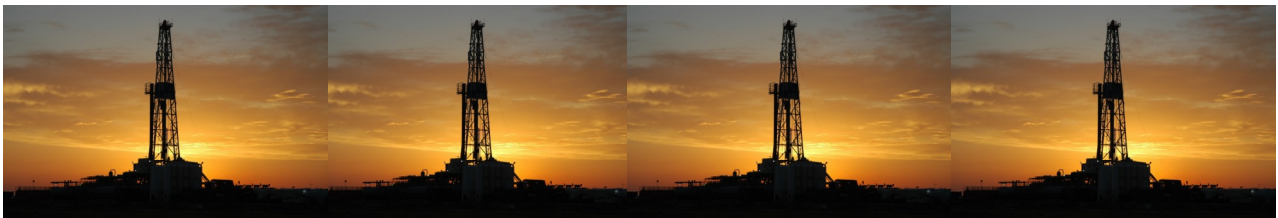
American Warrior, Inc., Garden City (KS), reports a new oil discovery in Finney County. The #1-27 O'Brate - Beach found oil deposits in the Pawnee Limestone at site located over one mile south the Pierceville Township pool - a field American Warrior established in 2014 with the similar pay. The new Beach Northwest Field discovery well is situated in the NW/4 of section 27- T25s- R31W, about two miles south-

west of the town of Pierceville. Total depth is 5,050 ft. American Warrior soon after completed their #1-22 O'Brate - Beach as a Fort Scott Limestone producer in the SW/4 of section 22- T25s- R31W to add a new pay source in the new pool.

Downing - Nelson Oil Company, Inc., Hays (KS), has discovered new oil reserves at the #1-5 Oelkers - Werth Unit in the NE/4 of section 5- T16s- R19W in Rush County. The wildcat well is producing crude from an undisclosed formation almost one mile west of multiple-zone oil production in the Zimm Field (1959). The new field is named Zimm Southwest. Discovery Drilling tools drilled the well to a total depth of 3,677 ft, about six miles northwest of Liebenthal, Kansas.

Abercrombie Energy, LLC, Wichita (KS), has established new Marmaton oil production at the #1-22 Christy Farms in the NE/4 of section 22- T16s- R32W in Scott County. The 4,800-ft deep wildcat well discovered the new reserves over two miles from Cherokee production in the Brown Cliff Field (2013). The new Christy Farms Field lies eleven miles northeast of Scott City, Kansas.

Red Oak Energy, Inc., Wichita (KS), has established the Stone Fox Field in Scott County with the completion of the #1-30 ST - SI Unit in the NW/4 of section 30- T17s- R33W. The wildcat well discovered Marmaton oil deposits at site located nearly two miles from the Isbel Northeast pool (2012), or six miles northeast of the town of Modoc, Kansas. Total depth of the well reached 4,929 ft.



Kansas Geological Foundation Memorials

| KGS Member | Date Deceased | Memorial Est. | KGS Member | Date Deceased | Memorial Est. |
|-------------------------|---------------|---------------|----------------------------|---------------|---------------|
| Dan Bowles | 09/89 | 1990 | Claud Sheats | 02/02 | 2002 |
| John Brewer | 10/89 | 1990 | Merle Britting | 2002 | 2002 |
| George Bruce | 08/89 | 1990 | Harold Trapp | 11/02 | 2002 |
| Robert Gebhart | 01/90 | 1990 | Donald M. Brown | 11/02 | 2003 |
| Ray Anderson, Jr. | 11/90 | 1990 | Elwyn Nagel | 03/03 | 2003 |
| Harold McNeil | 03/91 | 1991 | Robert Noll | 09/03 | 2003 |
| Millard W. Smith | 08/91 | 1991 | Benny Singleton | 09/03 | 2003 |
| Clinton Engstrand | 09/91 | 1991 | Jay Dirks | 2003 | 2003 |
| M.F. "Ted" Bear | 10/91 | 1991 | J. Mark Richardson | 02/04 | 2004 |
| James & Kathryn Gould | 11/91 | 1991 | John "Jack" Barwick | 02/01 | 2004 |
| E. Gail Carpenter | 06/91 | 1993 | Richard Roby | 03/04 | 2004 |
| Benton Brooks | 09/92 | 1992 | Ruth Bell Steinberg | 2004 | 2004 |
| Robert C. Armstrong | 01/93 | 1993 | Gordon Keen | 03/04 | 2004 |
| Nancy Lorenz | 02/93 | 1993 | Lloyd Tarrant | 05/04 | 2004 |
| Norman R. Stewart | 07/93 | 1993 | Robert J. "Rob" Dietterich | 08/96 | 2004 |
| Robert W. Watchous | 12/93 | 1993 | Mervyn Mace | 12/04 | 2004 |
| J. George Klein | 07/94 | 1994 | Donald Hoy Smith | 04/05 | 2005 |
| Harold C.J. Terhune | 01/95 | 1995 | Richard M. Foley | 06/05 | 2005 |
| Carl Todd | 01/95 | 1995 | Wayne Brinegar | 06/05 | 2005 |
| Don R. Pate | 03/95 | 1995 | Charles B. Moore | 09/96 | 2005 |
| R. James Gear | 05/95 | 1995 | Jack Heathman | 05/06 | 2006 |
| Vernon Hess | 06/95 | 1995 | Charles Kaiser | 09/06 | 2006 |
| E. K. Edmiston | 06/95 | 1995 | Rod Sweetman | 08/06 | 2006 |
| Jack Rine | 07/95 | 1995 | Karl Becker | 10/06 | 2006 |
| Lee Cornell | 08/95 | 1995 | Frank Hamlin | 10/06 | 2006 |
| John Graves | 10/95 | 1995 | Marvin Douglas | 12/06 | 2006 |
| Wilson Rains | 10/95 | 1995 | Robert W. Hammond | 04/07 | 2007 |
| Heber Beardmore, Jr. | 09/96 | 1996 | Eldon Frazey | 04/07 | 2007 |
| Elmer "Lucky" Opfer | 12/96 | 1996 | Pete Amstutz | 05/07 | 2007 |
| Raymond M. Goodin | 01/97 | 1997 | Charles Spradlin | 05/07 | 2007 |
| Donald F. Moore | 10/92 | 1997 | Donald R. "Bob" Douglass | 09/07 | 2007 |
| Gerald J. Kathol | 03/97 | 1997 | Vincent Hiebsch | 11/07 | 2007 |
| James D. Davies | 08/88 | 1997 | Glen C. Thrasher | 03/08 | 2008 |
| R. Kenneth Smith | 04/97 | 1997 | Peg Walters | 06/08 | 2008 |
| Robert L. Dilts | 05/97 | 1997 | Theodore "Ted" Sandberg | 07/08 | 2008 |
| Delmer L. Powers | 06/72 | 1997 | James Ralstin | 11/08 | 2008 |
| Gene Falkowski | 11/97 | 1997 | Earl Brandt | 04/09 | 2009 |
| Arthur (Bill) Jacques | 01/98 | 1998 | Walter DeLozier | 05/09 | 2009 |
| Bus Woods | 01/98 | 1998 | Don D. Strong | 01/10 | 2010 |
| Frank M. Brooks | 03/98 | 1998 | John Stone | 02/10 | 2010 |
| Robert F. Walters | 04/98 | 1998 | Craig Caulk | 03/10 | 2010 |
| Stephen Powell | 04/98 | 1998 | Joseph E. Moreland, Jr. | 03/10 | 2010 |
| Deane Jirrels | 05/98 | 1998 | Gene Garmon | 03/10 | 2010 |
| William G. Iversen | 07/98 | 1998 | James F. Dilts | 05/10 | 2010 |
| Ann E. Watchous | 08/98 | 1998 | Jerry Pike | 05/10 | 2010 |
| W.R. "Bill" Murfin | 09/98 | 1998 | Donald Hollar | 06/10 | 2010 |
| Donald L. Hellar | 11/98 | 1998 | Delbert Costa | 08/10 | 2010 |
| Joseph E. Rakaskas | 01/99 | 1999 | John Tanner | 08/10 | 2010 |
| Charles W. Steincamp | 02/99 | 1999 | William (Bill) Owen | 09/10 | 2010 |
| Robert and Betty Glover | 10/96 | 1998 | Harold (Hal) Brown | 10/10 | 2010 |
| Howard E. Schwerdtfeger | 11/98 | 1999 | Edmund G. Lorenz | 11/10 | 2010 |
| W. W. "Brick" Wakefield | 03/99 | 1999 | Thomas E. Black | 05/11 | 2011 |
| V. Richard Hoover | 01/00 | 2000 | Wayne E. Walcher | 07/11 | 2011 |
| Warren E. Tomlinson | 01/00 | 2000 | Henry F. Filson | 07/11 | 2011 |
| James A. Morris | 01/00 | 2000 | Thomas Ray | 07/11 | 2011 |
| Eric H. Jager | 03/00 | 2000 | Edgar E. Smith | 09/11 | 2012 |
| Kenneth W. Johnson | 03/00 | 2000 | Marilyn Messenger | 06/13 | 2013 |
| Dean C. Schaake | 03/00 | 2000 | Micheal Mitchell | 09/13 | 2013 |
| Fred S. Lillibridge | 05/00 | 2000 | Orvie Howell | 11/13 | 2013 |
| Jerry A. Langrehr | 07/00 | 2000 | James Thompson | 11/13 | 2013 |
| Clark A. Roach | 07/00 | 2000 | Dick Rowland | 09/13 | 2014 |
| Floyd W. "Bud" Mallonee | 10/00 | 2000 | Robbie Thompson | 12/13 | 2014 |
| Ralph W. Ruuwe | 09/00 | 2000 | Kris Kennedy | 04/14 | 2015 |
| Robert L. Slamal | 02/01 | 2001 | Annette Hedke | 02/15 | 2015 |
| Jerold E. Jespersen | 06/01 | 2001 | James Devlin | 04/15 | 2015 |
| William A. Sladek | 06/01 | 2001 | Robert Gensch | 09/15 | 2015 |
| Harlan B. Dixon | 06/01 | 2001 | Jerald Rains | 05/16 | 2016 |
| Edward B. Donnelly | 08/01 | 2001 | Max Houston | 05/16 | 2016 |
| Richard P. Nixon | 02/02 | 2002 | | | |
| Robert W. Frensley | 12/01 | 2002 | | | |
| Gerald W. Zorger | 01/02 | 2002 | | | |
| Don L. Calvin | 03/02 | 2002 | | | |



**PALOMINO
PETROLEUM, INC.**

**Oil & Gas
Exploration and Production**

Since 1969

PPIKS.COM

316.799.1000

 **WKDC**
WESTERN KANSAS
DIRT CONSTRUCTION LLC

SPECIALIZING IN ALL
DIRT SERVICES FOR OILFIELD,
FARMING AND CONSTRUCTION

JASON DUNAGAN

OFFICE: 620.872.DIRT(3478)

CELL: 620.241.0536

WEB: wkdc.com

EMAIL: jason@wkdc.com



**WW DRILLING
LLC**

PROVIDING ROTARY DRILLING
SERVICES THROUGHOUT
NORTH AMERICA

KIRBY STRUTT

kirby@wwdrilling.com
785.259.5976

JD HAFLIGER

jd@wwdrilling.com
785.743.8030

785.743.6774

WWDRILLING.COM



PALOMINO FLIGHTS

—Aircraft Leasing—

Private aircraft available
around the clock for all of your
business & personal travel needs

316.799.1000



palominoflights.com

CHANGE SERVICE REQUESTED

KGS BULLETIN
 November—December 2016

November 2016

| Sun | Mon | Tue | Wed | Thu | Fri | Sat |
|-----|-----|---------------------------------|-----|-----------------------------------|-----|-----|
| | | 1 Tech Meeting | 2 | 3 | 4 | 5 |
| 6 | 7 | 8 | 9 | 10 | 11 | 12 |
| 13 | 14 | 15 Tech Meeting KGS Board | 16 | 17 | 18 | 19 |
| 20 | 21 | 22 | 23 | 24 Library Closed Thanksgiving | 25 | 26 |
| 27 | 28 | 29 Tech Meeting | 30 | | | |

December 2016

| Sun | Mon | Tue | Wed | Thu | Fri | Sat |
|-----|---------------------------------------|--------------------|-----|-----|-----|-----|
| | | | | 1 | 2 | 3 |
| 4 | 5 | 6 Tech Meeting | 7 | 8 | 9 | 10 |
| 11 | 12 | 13 KGS Board | 14 | 15 | 16 | 17 |
| 18 | 19 | 20 Tech Meeting | 21 | 22 | 23 | 24 |
| 25 | 26 Library Closed For Christmas | 27 | 28 | 29 | 30 | 31 |